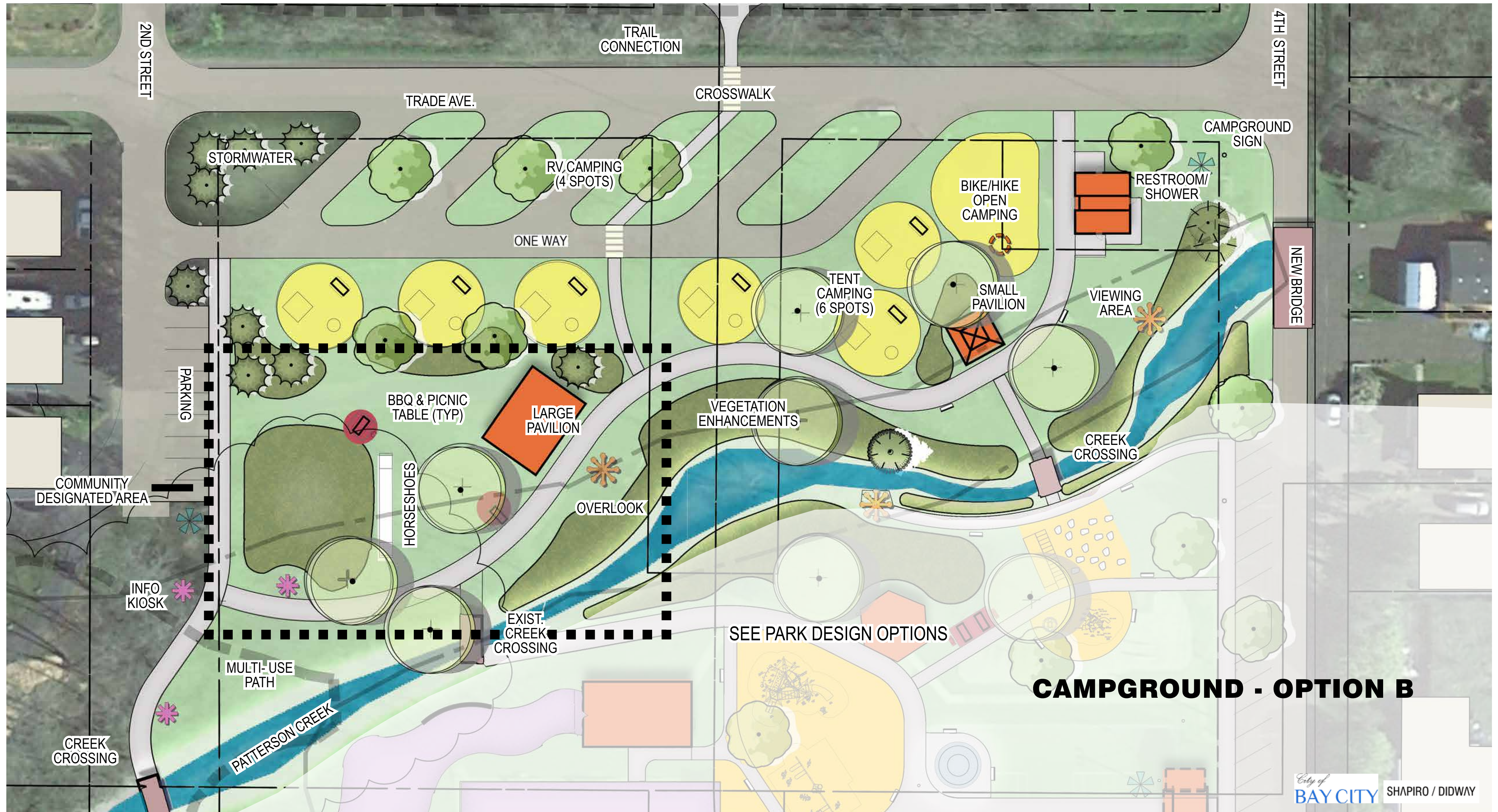
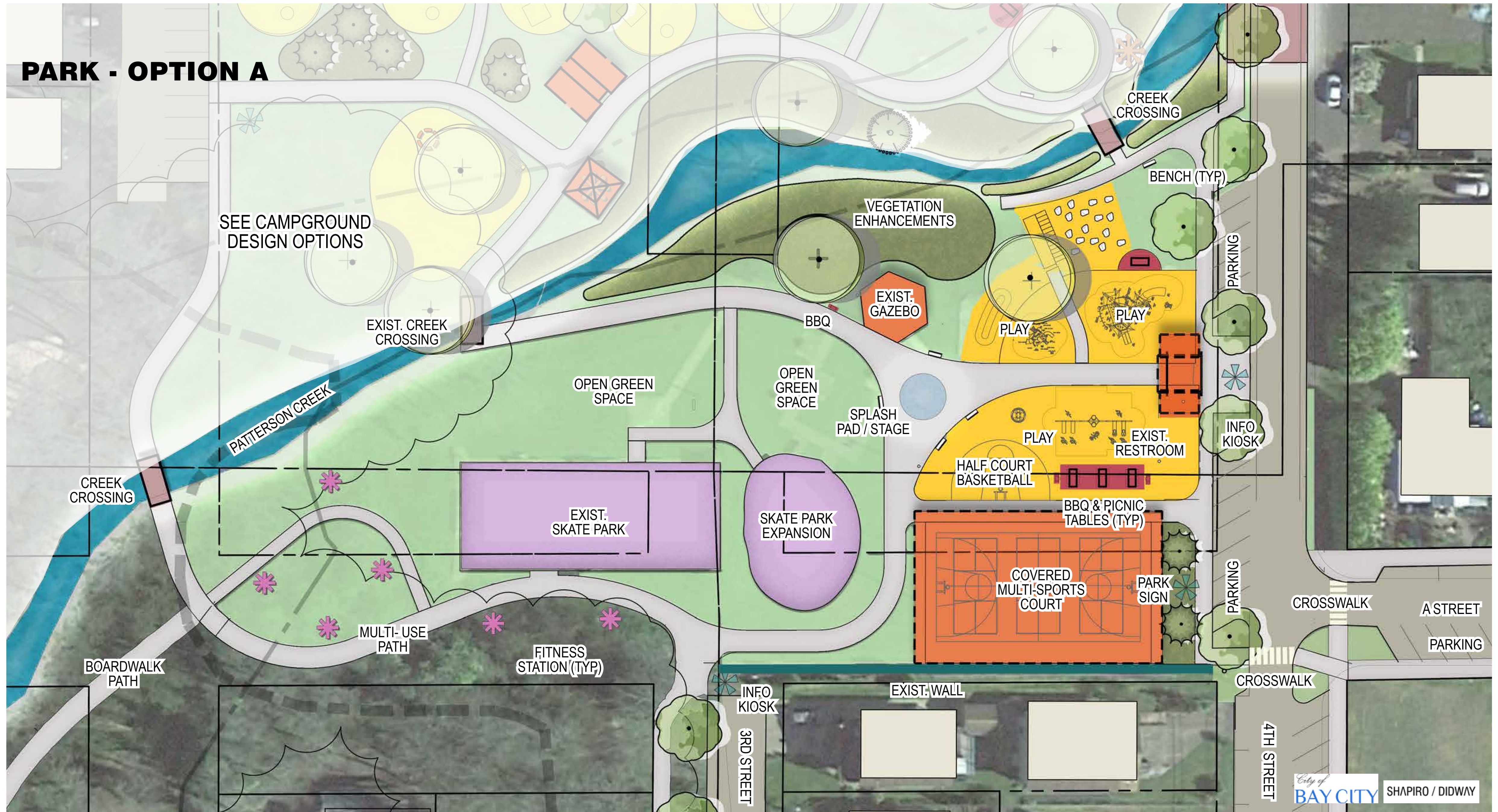


CAMPGROUND - OPTION A



CAMPGROUND - OPTION B

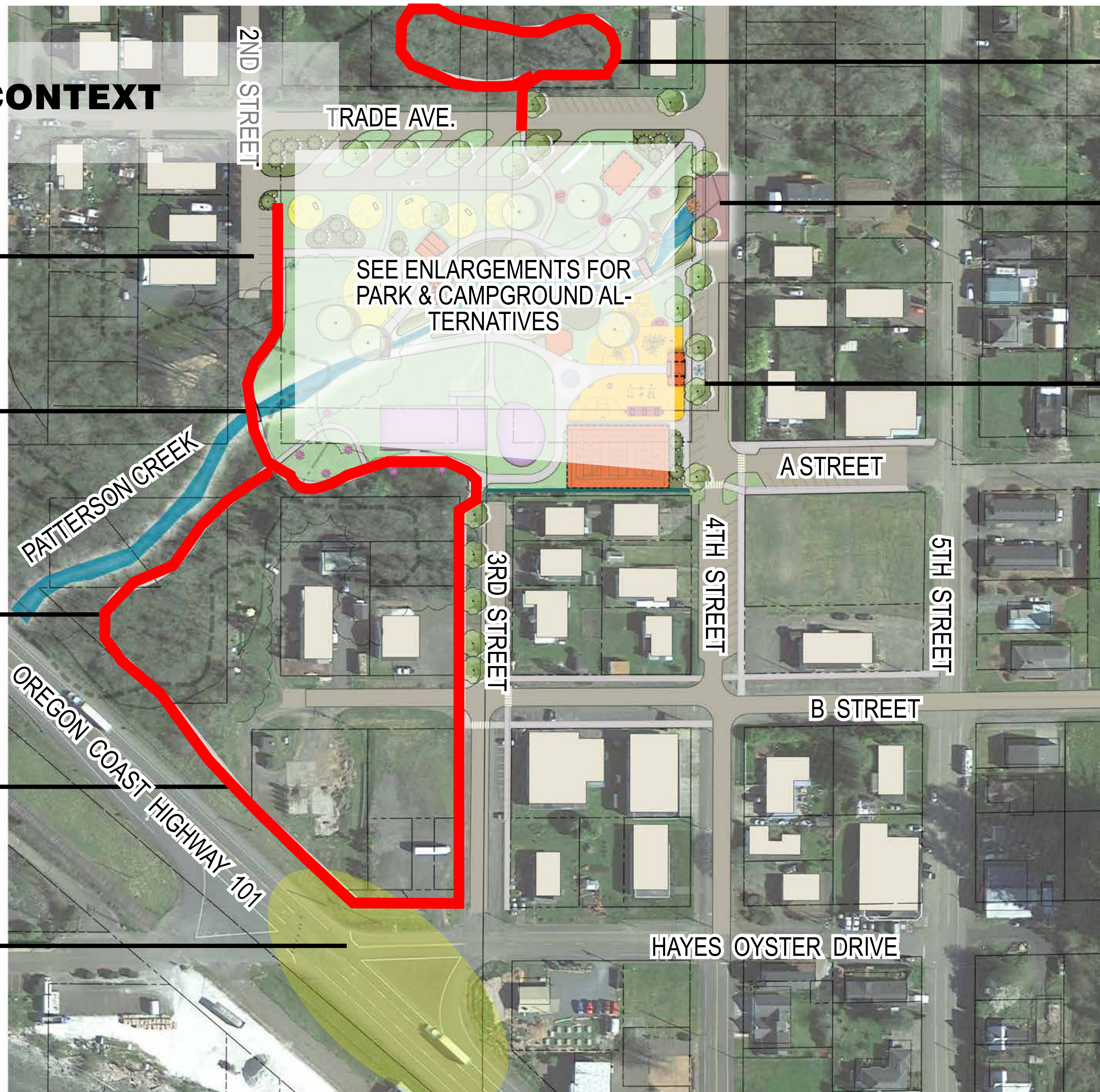
PARK - OPTION A



PARK - OPTION B



MASTER PLAN - SITE CONTEXT



PARKING @ 2ND STREET

CREEK CROSSING

MULTI-USE TRAIL & BOARDWALK (SENSITIVE AREAS) TO CREATE LOOP SYSTEM

ROUTE TRAIL OUTSIDE OF ODOT ROW

HWY 101 PEDESTRIAN CROSSING

TRAIL & BOARDWALK (SENSITIVE AREAS)

NEW BRIDGE

SEE DESIGN OPTIONS FOR PARK FRONTAGE IMPROVEMENTS (8' SIDEWALK, CURB EXTENSIONS, DIAGONAL PARKING & STREET TREE PLANTINGS)

PARK FRONTAGE, TRAILS & SIGNAGE



BOARDWALK TRAILS (SENSITIVE AREAS)

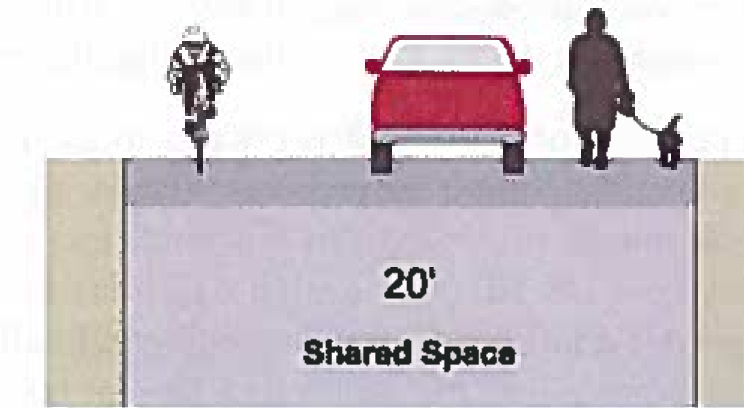


SOFT SURFACE TRAILS

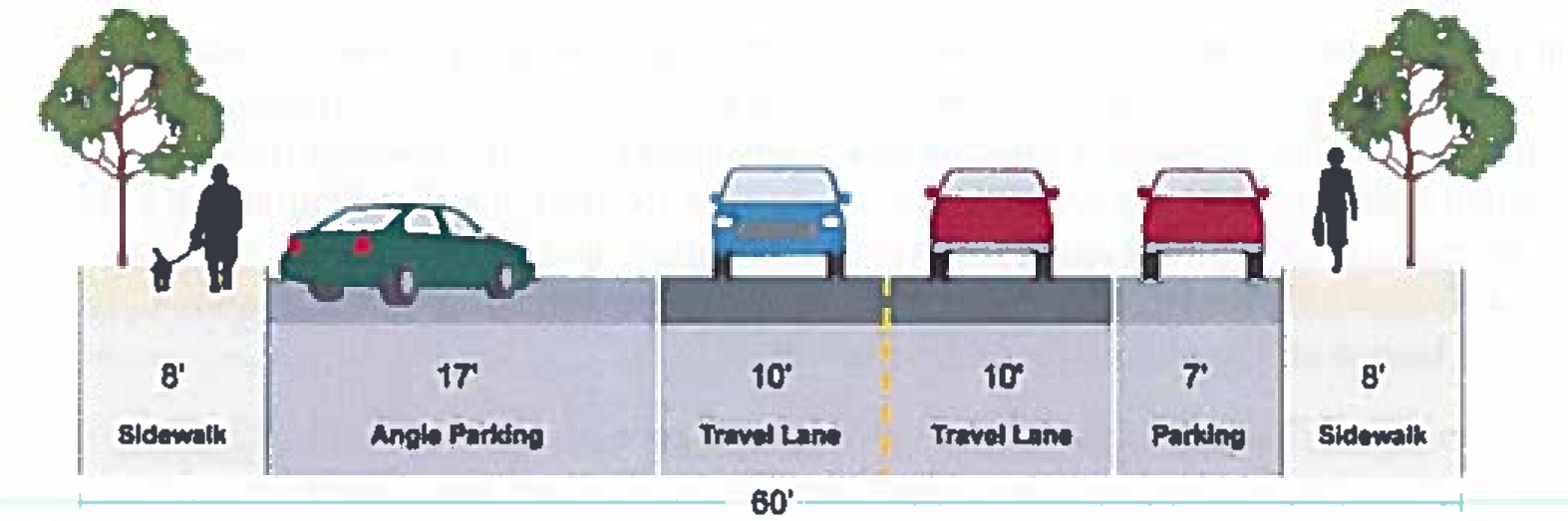


MULTI USE TRAILS

Local Street (narrow)



Urban Downtown Collector
4th Street, A Street and B Street

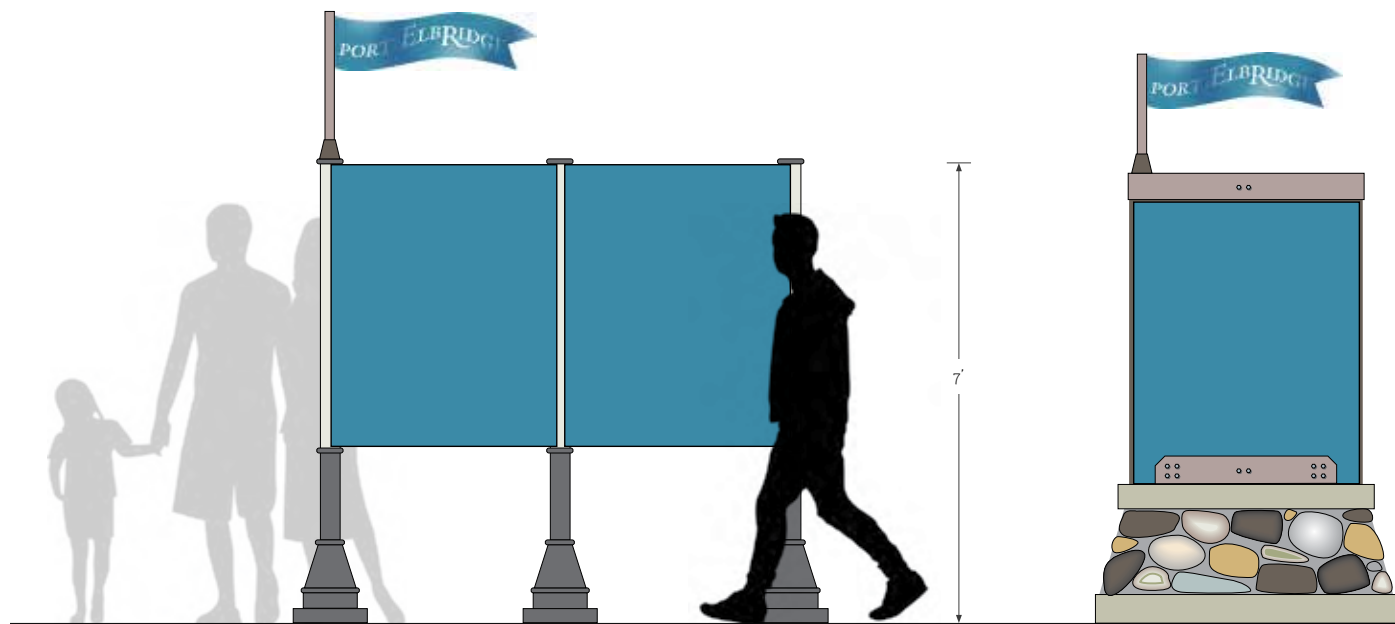
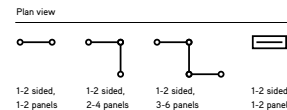


TYPICAL STREET CROSS SECTIONS

Kiosk

Kiosks in this program are really visitor information hubs that link one village to another. This element of the program can be the most welcoming of hosts. From village to village, these kiosks offer the opportunity to establish a consistent visitor services resource. Kiosks share a design standard, but will also express a village's individuality with the application of specific colors, motifs and graphics.

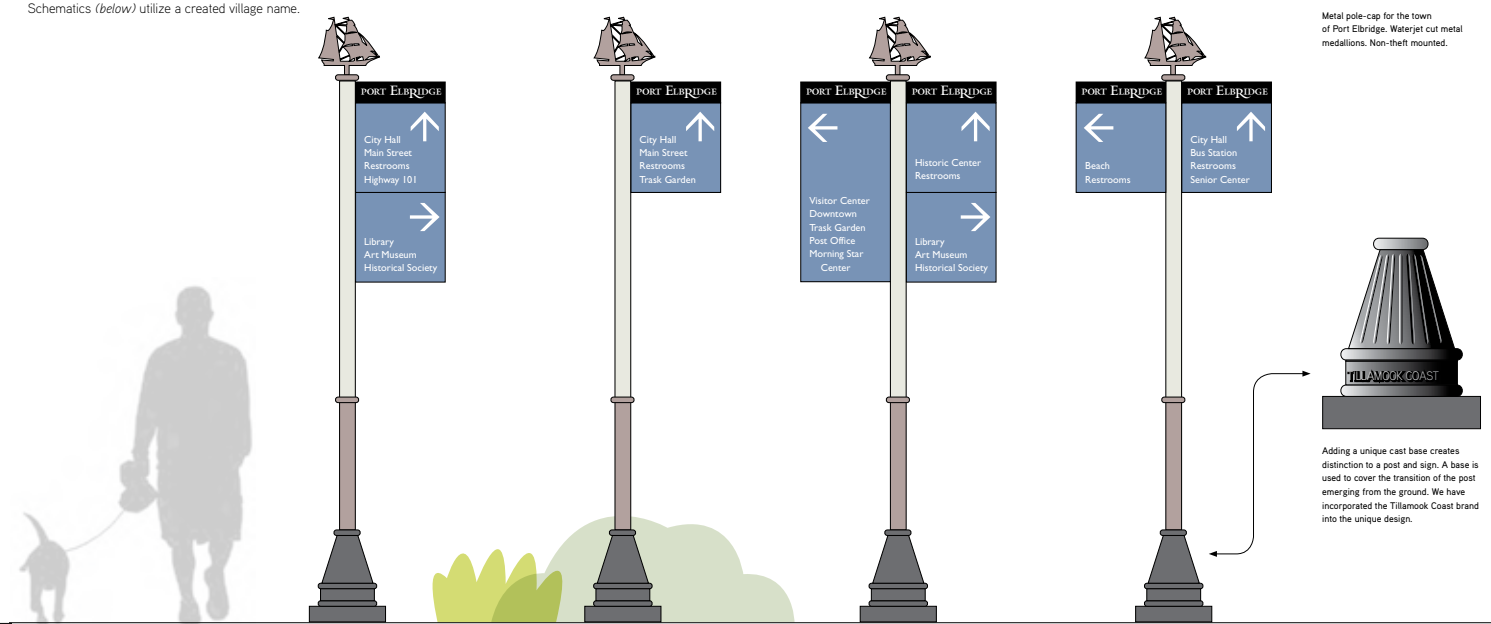
These kiosks are expendable and can be 1-sided, 2-sided, 3-sided, 4-sided. There are options of metal slatwork or rock bases. These kiosks closely relate to the design of the pedestrian wayfinding plan.



Pedestrian Wayfinding Village Scheme—Elbridge

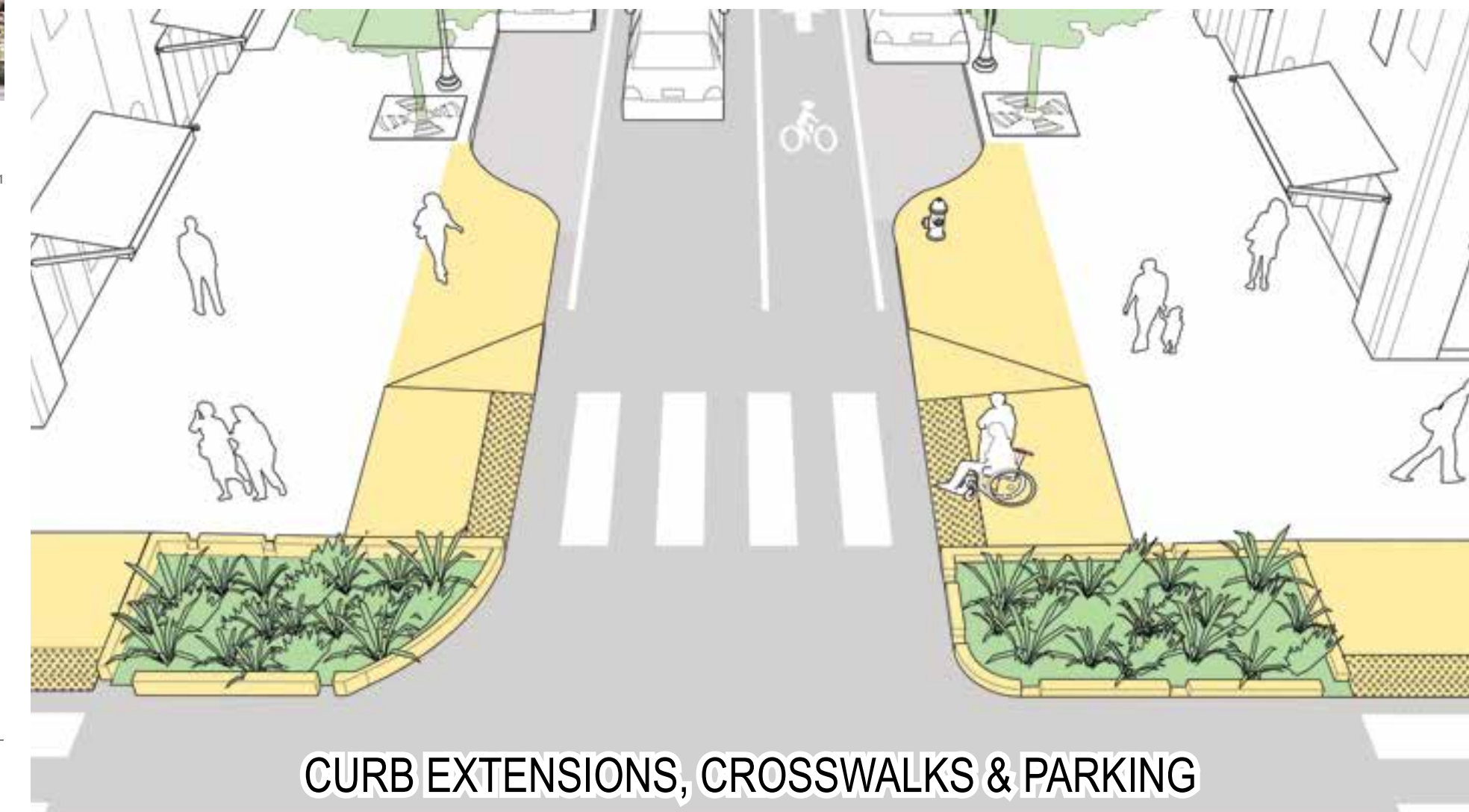
Downtown wayfinding signage for pedestrians enliven the visitor experience and extend helpful services. Directionals and identification make businesses and destinations far more accessible, fun to find, and can add appeal to streetscapes. Pedestrian wayfinding signs are flexible and specific to each village through color scheme and the unique sculpted metal icon at the top of each directional sign.

Schematics (below) utilize a created village name.



page 21

WAYFINDING & SIGNAGE

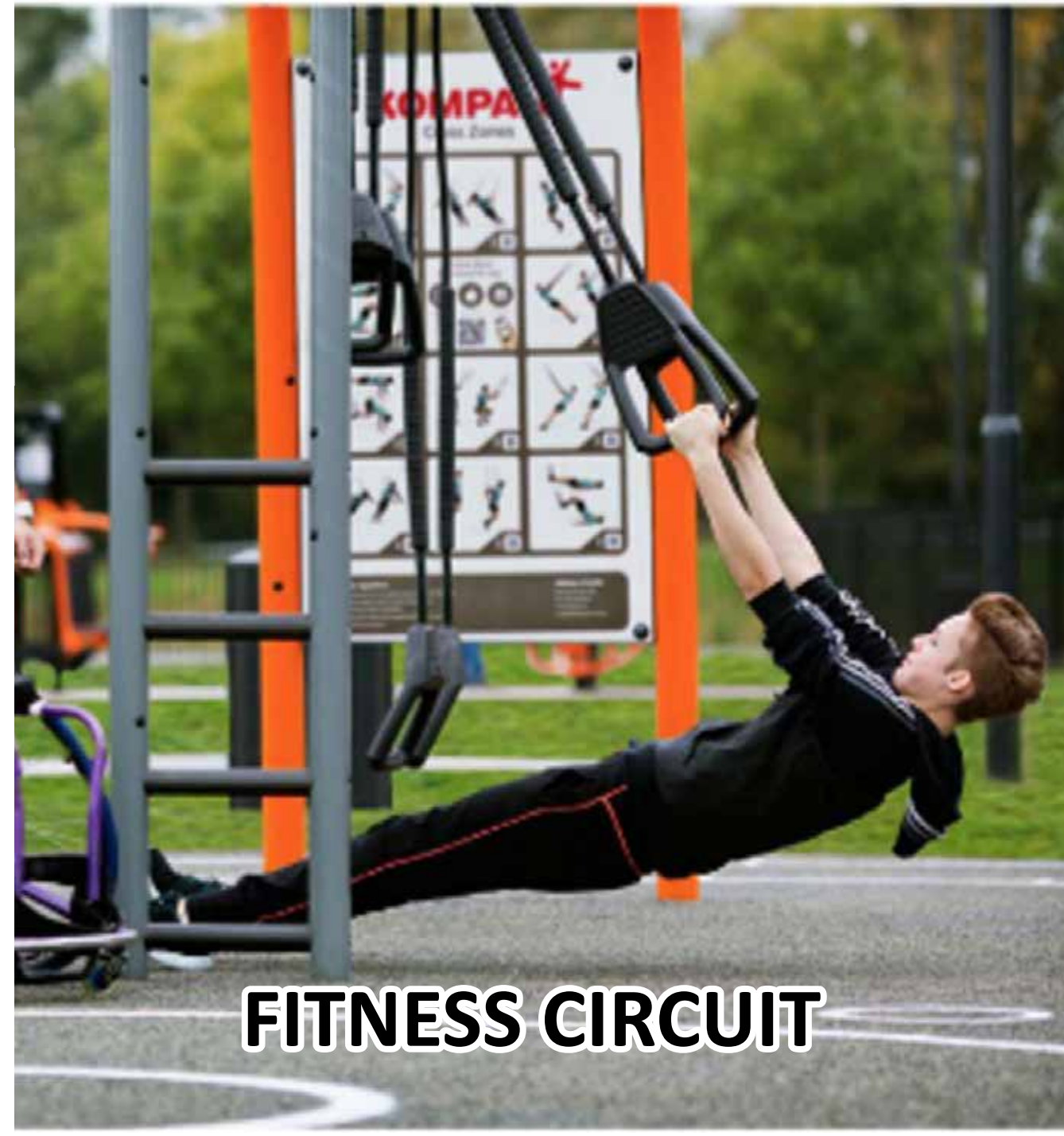


CURB EXTENSIONS, CROSSWALKS & PARKING

PARK FEATURE



SPLASH PAD



FITNESS CIRCUIT



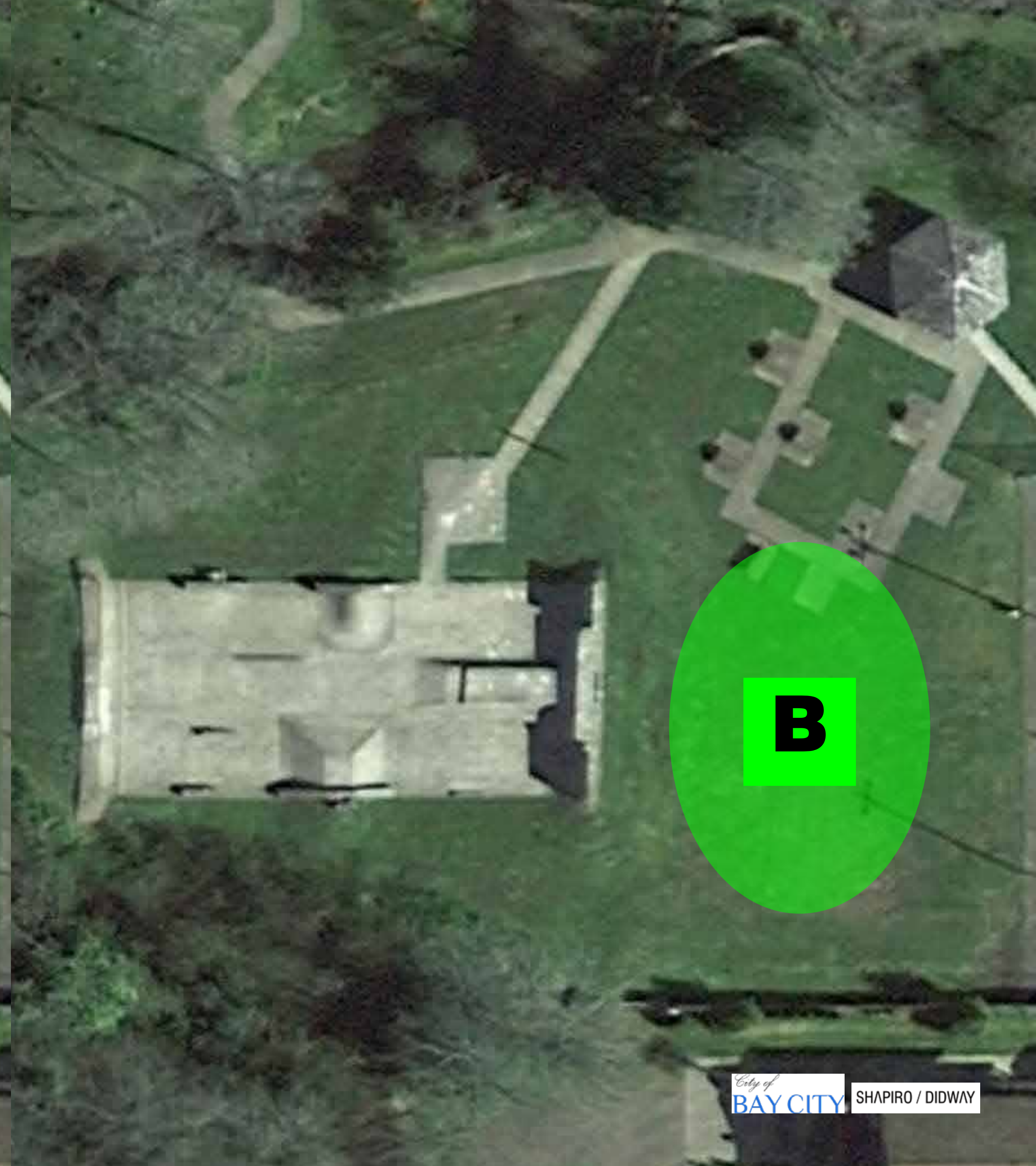
BBQ, TABLES & CHAIRS



STAGE



**MAIN PARK ENTRY,
RESTROOM & STORAGE**







HOCKEY

TENNIS

SHUFFLEBOARD

VOLLEYBALL

BASKETBALL

FOUR SQUARE

COURT GAMES



SPORTS COURTS

PICKLEBALL COURTS



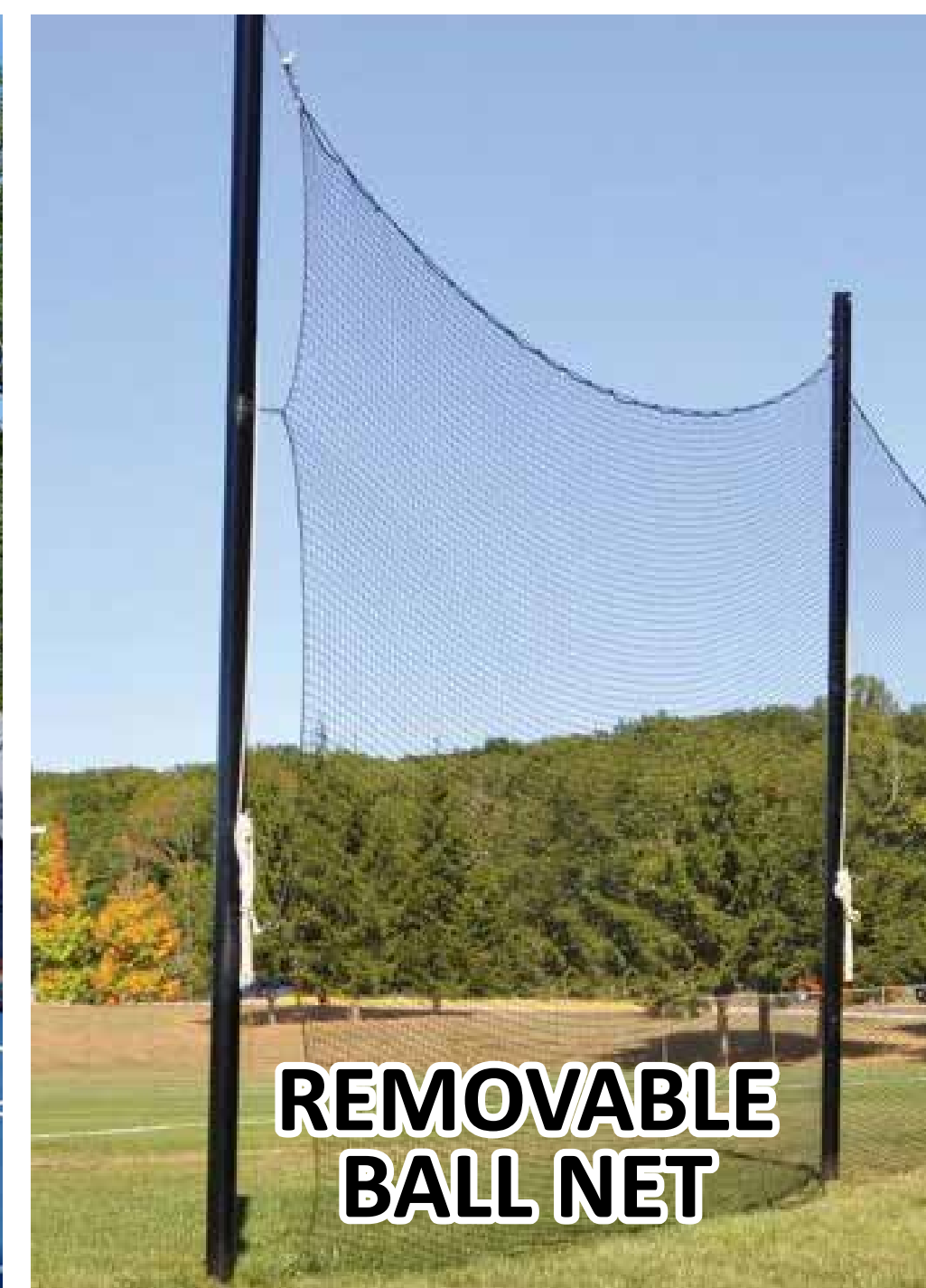
COVERED AREA



MULTI SPORTS COURT



HALF & FULL BASKETBALL COURT W/ ADJUSTABLE HOOPS



REMOVABLE BALL NET



GAME COURTS

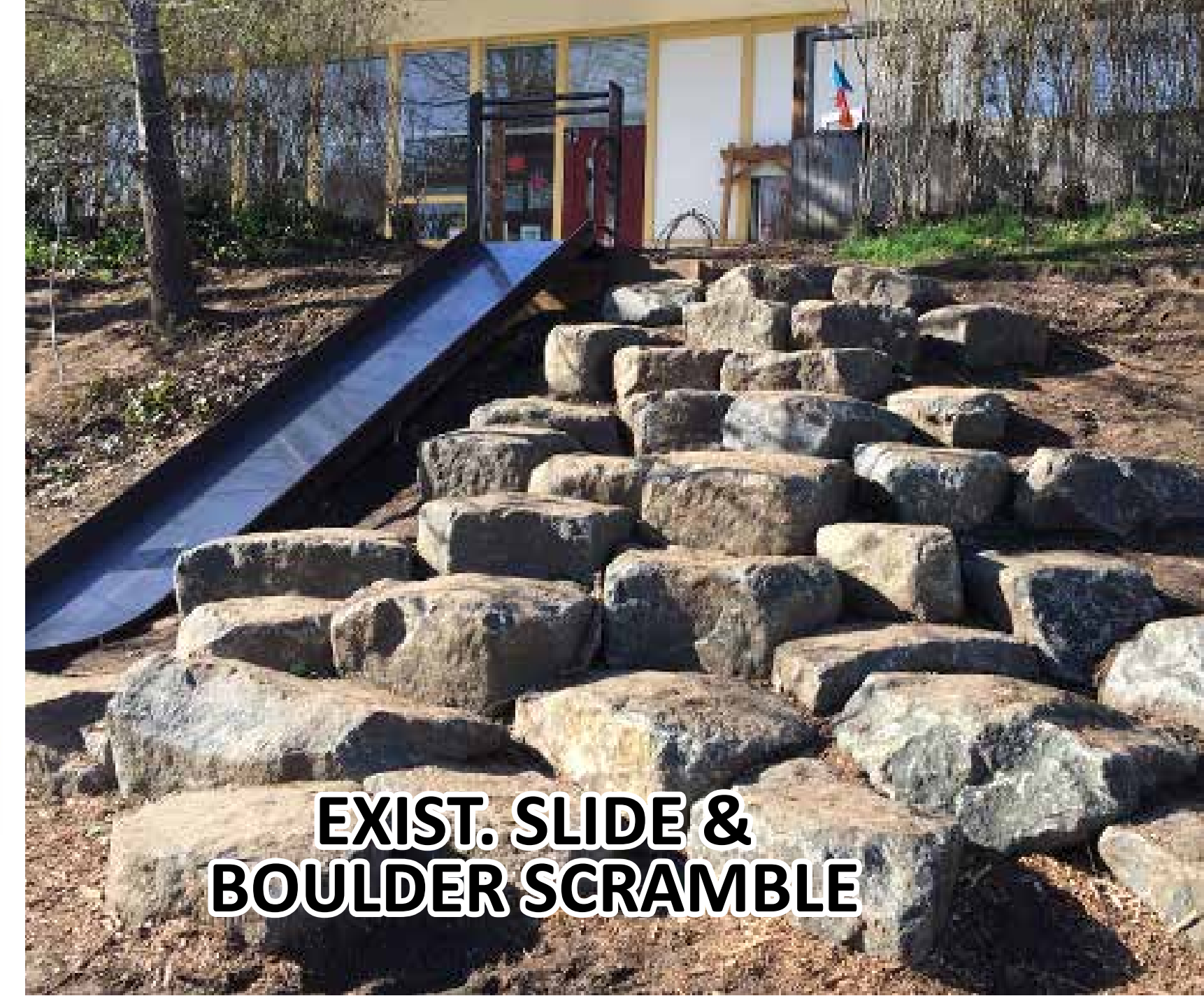
PLAY OPPORTUNITIES



LITTLE KID PLAY



OLDER KID PLAY



EXIST. SLIDE & BOULDER SCRAMBLE



HILL PLAY @ SKATE PARK BERM (OPTION A ONLY)



SWINGS



A

GRINDING SURFACES



ROLLING FEATURES



RAILS



B

BEGINNER BOWL



C

BEGINNER LINEAR FEATURES

A

**UNSCRIPTED
PLAY
TOWERS
CLIMBING NETS**



B

**TRADITIONAL
POST & DECK
PREDETERMINED
PLAY ROUTES**



C

HYBRID (A & B)



**THEMED
STRUCTURE**



**NATURE
PLAY**



**CLIMBING
FEATURES**



**PLAY
MOUNDS**



MUSIC



**WATER &
SAND**



**GAMES
(PING PONG)**



UNIVERSAL USE



PATTERSON CREEK



VEGETATION ENHANCEMENTS AT STREAM EDGE



INTERPRETIVE SIGNS



INTERPRETIVE ART



OVERLOOK @ CREEK



PROGRAMMING



VIEWING AREAS BEHIND VEGETATION



STREAM BANK RESTORATION

BIKE / HIKE CAMPING AMENITIES



COVERED GROUP PICNIC AREA & CAMPING



BIKE PARKING



LOCKERS



**LOCKERS W/
ELECTRICAL
OUTLETS**

**REPAIR STATION
& PUMP**



BIKE LOCKERS



**ELECTRICAL
OUTLETS**

RV & TENT CAMPING AMENITIES



PULL THROUGH RV CAMPING



TENT CAMPSITES (VEHICULAR ACCESS)



RESTROOM & SHOWERS



TENT PADS





COMMUNITY DESIGNATED AREA

PICNIC TABLE & BBQ



HORSESHOE PITS



SMALL SHELTER



DAY USE PAVILION